



**Karnatak University's,
KARNATAK SCIENCE COLLEGE, DHARWAD
NAAC Accredited**

Phone No: 0836-2215410 & 2215400 Fax: 0836-2744334
Email: principal.kscd@gmail.com Web: www.kscd.ac.in



Teaching -learning infrastructure at KSCD

The Campus is located in the heart of the Dharwad city and spread in 55 acres of land with intriguing natural landscape. There are 21 buildings in 33,000 square meters built up area. The college has independent establishments with adequate physical and academic amenities for UG / M.Sc and PhD programmes.

- Adequate parking facility and separate wash rooms (09+08) for gents and ladies are available on the campus.
- The institute has technology enabled Classrooms (34), Seminar hall (8) and there are 30 well equipped Laboratories.
- There are 5 Museums namely Botany Museum, Geology Museum, Zoology Museum, Geography Museum and Criminology and Forensic Science Museum.
- The electrical supply is provided by Karnataka Electrical Board (KEB), 03 Transformers (20 KV) are installed by KEB and 04 Transformers are installed by the college. Solar energy poles with the capacity of 100 AH are installed on the campus. LED advantage is utilized. The water resources include Municipality water supply and 07 bore wells.
- Kaveri girl's hostel accommodates 500 students. The facilities include Mess hall, Reading room, TV room, solar water heater, 24x7 Security vigilance and other extracurricular facilities are also augmented. The boy's students are accommodated in Godhavari and Thungabhadra hostels.
- Independent units like the NSS, NCC, Grievance Redress Unit, Counseling and Career Guidance, Placement Unit, Health Centre, Canteen, Recreational spaces for staff and students, Auditorium, Alumni Association, A new commercial complex etc., are established.
- Apart from the main garden on the campus, each department is well maintained with gardens and beautified surroundings around the premises.
- The college has a central library with a separate two storied building spanning over an area of 3440.52 square meters. Recently a 24 X 7 Library having spacious two reading halls is established.

**PHYSICAL FACILITIES / INFRASTRUCTURE OF
KARNATAK UNIVERSITY'S KARNATAK SCIENCE COLLEGE
(CONSTITUENT COLLEGE) DHARWAD**

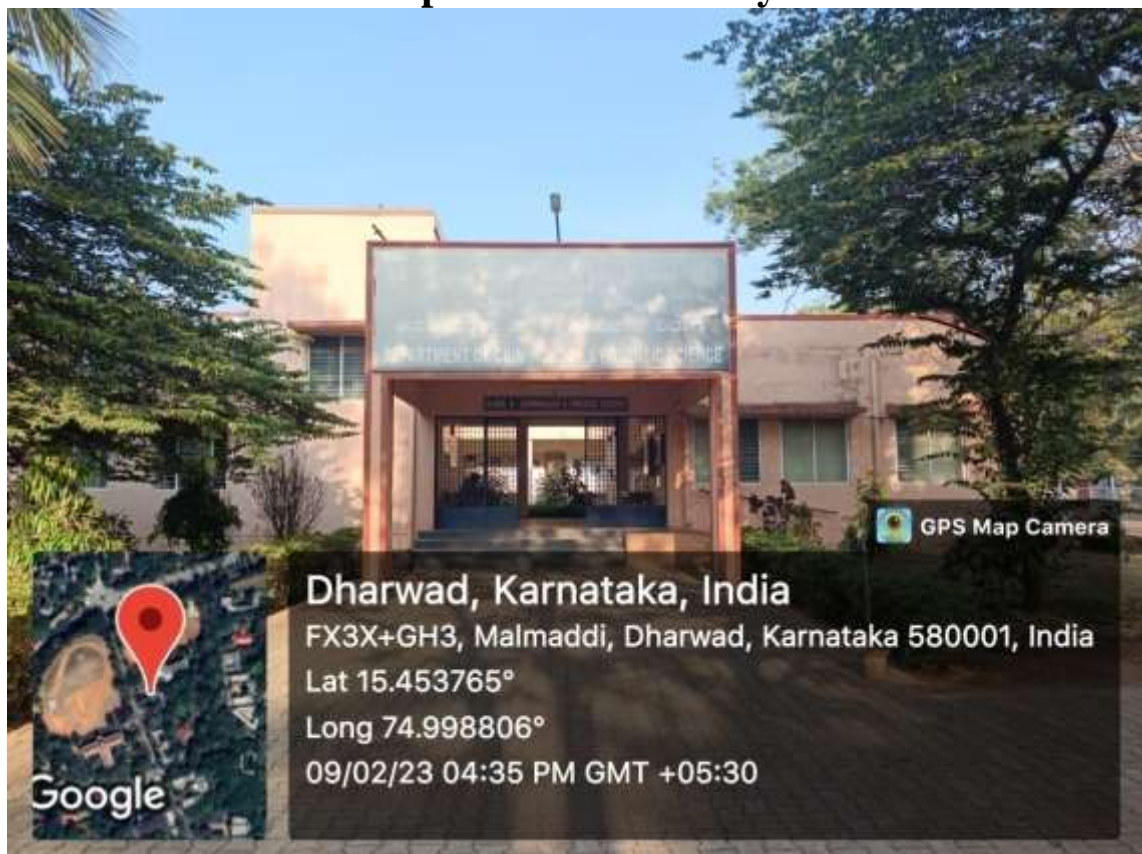
S.N.	Particulars	Total Nos.	S.N.	Particulars.	Total Nos.
1.	Principal Chamber	01	19.	Grievances redress Cell	01
2.	Administrative Office	01	20.	Central Library	01
3.	HODs Rooms	08	21.	Library 24X 7	01
4.	Faculty members Individual Rooms	50	22.	Auditorium	02
5.	Class Rooms	34	23.	Amphitheatre	01
6.	Smart Class Rooms	12	24.	Gymnasium	01
7.	Seminar Halls	08	25.	Yoga theater	02
8.	Laboratories of Various Depts.	29	26.	Sports Ground	01
9.	Computer laboratories	02	27.	Indoor Game facilities	08
10.	Department Office Rooms	08	28.	Gardens	08
11.	Store Rooms	08	29.	Commercial Complex	01
12.	Wash Rooms (Gents)	09	30.	NCC Office	01
13.	Wash Rooms (Ladies)	08	31.	NSS Office	01
14.	Ph.D Research groups Sponsored Projects (DST/UGC/KSTA/UGC)	19	32.	Teaching Assts. & Guest faculty sitting Rooms	06
15.	Multimedia Labs	07	33.	Canteen	01
16.	Individual Dept Libraries	01			01
17.	IQAC Office	08			
18.	NAAC Office	01			



Main Administrative Block, Chemistry (UG & PG), Biotechnology, Geology & Statistics departments



Department of Botany



Department of Criminology and Forensic Science



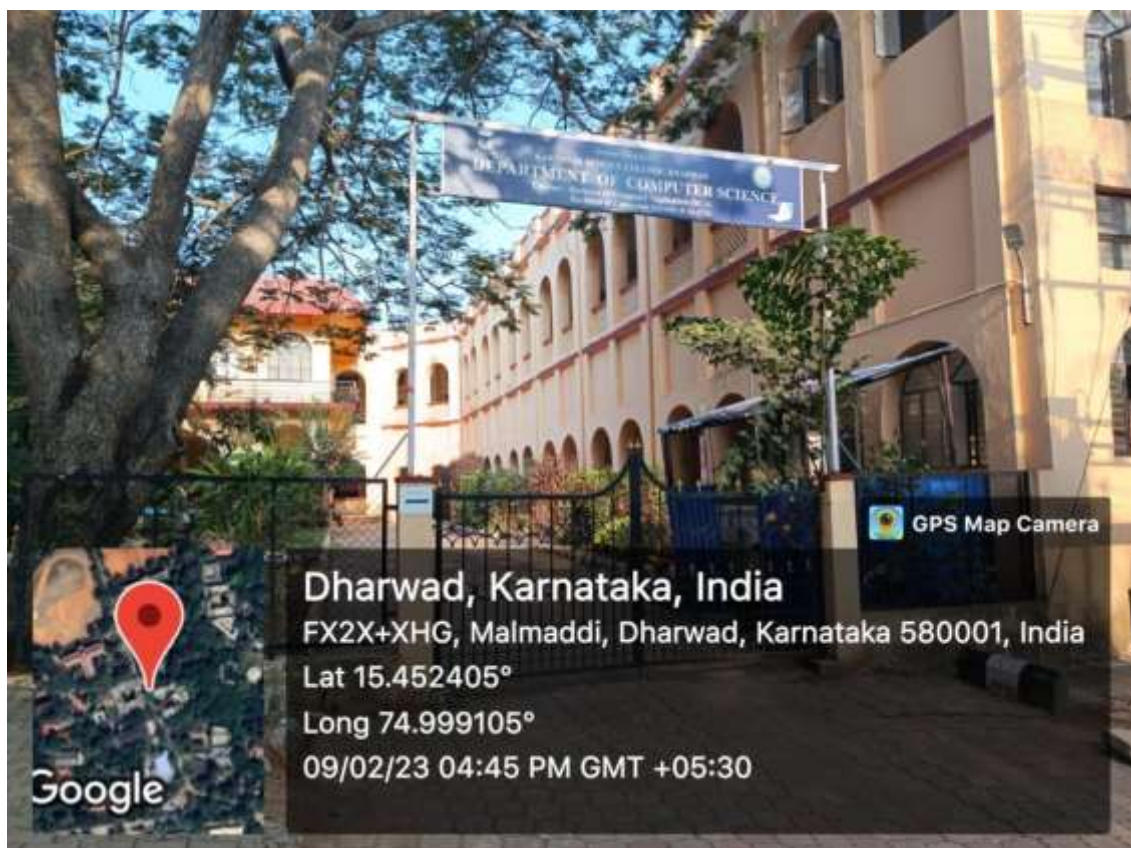
Department of Geography



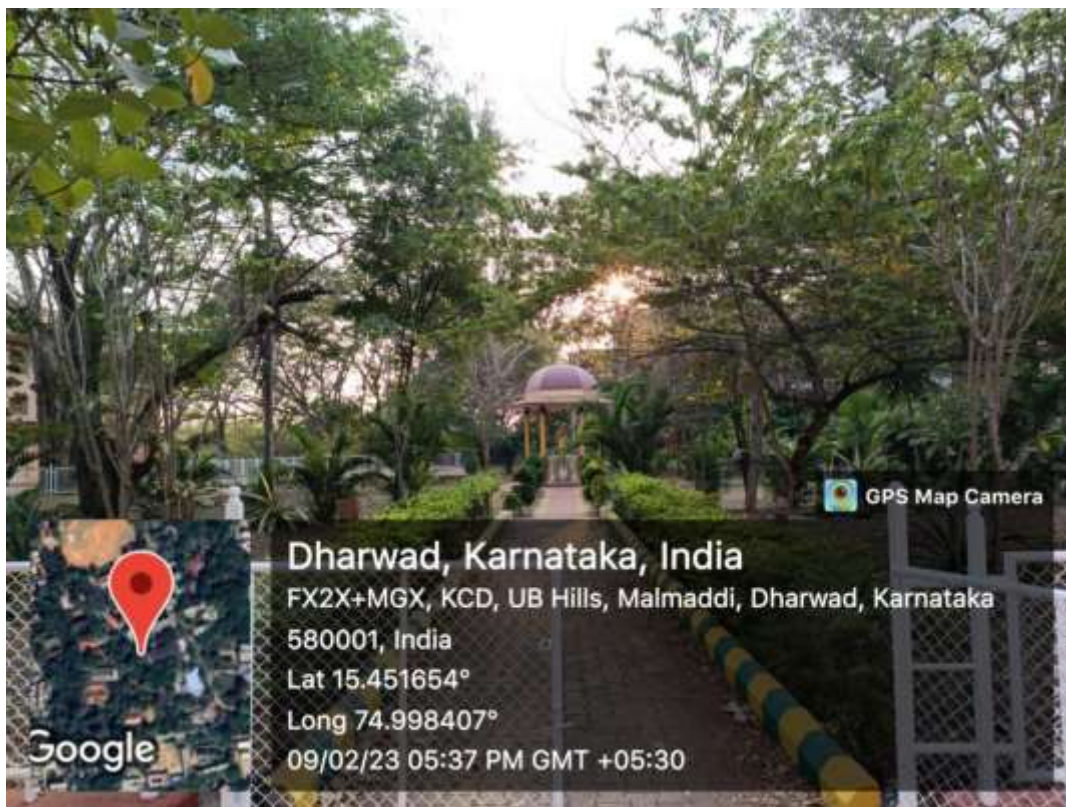
Department of Physics



Department of Zoology Microbiology and Industrial Fish & Fisheries



BCA department



Basava Vana Garden

P.G. DEPT. OF MATHEMATICS



- I. CLASSROOMS:** Technology enabled learning spaces, seminar halls, tutorial spaces, laboratories, botanical garden, Animal house, specialized facilities and equipment for teaching, learning and research etc. Class rooms are equipped with LCD Projectors with supporting accessories. The classrooms in the college are spacious and can accommodate all students comfortably with good view of the board and display. The ventilation and lighting facilities are adequate. The seating facilities and number of desks in the class rooms for the students is well established. Provisions are made for usage of internet facility Wi-Fi / LAN / Audio Visual tools augmented in the classrooms. Digital boards are fixed in the classrooms. Audio Visual (AV) tools availability and Power Point Presentations (ppt) used by faculty members in Teaching-Learning paradigm. Each departments are having Seminar halls.

LEARNING RESOURCES AND ICT ENABLED CLASSROOMS

Department/Section	Room number or Name of classrooms/Seminar Hall with LCD / wifi/LAN facilities with room numbers	Type of ICT facility
Botany	B1 and B2	B1 Smart class (LCD) BSNL optical fibre FTH-LAN/wifi
BCA	BCA1, BCA2, BCA3, BCA4 and BCA5	BCA4 and BCA5 Smart class (LCD) BCA1, BCA2, BCA3, BCA4 and BCA5 BSNL optical fibre FTH-LAN/wifi
Chemistry	C1, C2, C3 and C4	C1, C3 and C4 Smart class (LCD) BSNL optical fibre FTH-LAN/wifi
Biotechnology	C2	C2 Smart class (LCD) BSNL optical fibre FTH-LAN/wifi
Criminology and Forensic Science	Lombroso and Southerland	Lombroso Smart class and Southerland LCD BSNL optical fibre FTH-LAN/wifi
Electronics	C2	C2 Smart class (LCD) BSNL optical fibre FTH-LAN/wifi
Genetics	G4 and G5	
Geology	79	79 Smart Class BSNL optical fibre FTH-LAN/wifi
Geography	G1, G2, G3, G4, G5 and G6	G6 Smart class BSNL optical fibre FTH-LAN/wifi
Industrial Fish and Fisheries	Z4	Z4 Smart Class BSNL optical fibre FTH-LAN/wifi
Microbiology	Z2, D1 and Fish lab with LCD	Z2 Smart Class, Fish Lab with LCD BSNL optical fibre FTH-LAN/wifi
Physics	P1, P2 and P3	P1 Smart Class BSNL optical fibre FTH-LAN/wifi
Zoology	Z1 and Z2	Z2 Smart Class (LCD) BSNL optical fibre FTH-LAN/wifi
M.Sc Botany	B1	B1 Smart class (LCD) BSNL optical fibre FTH-LAN/wifi
M.Sc Chemistry	C5	C5 Smart Class (LCD) BSNL optical fibre FTH-LAN/wifi
M.Sc Mathematics	LH2 and New PG building, PG1 and PG2	New PG Block
M.Sc Physics	P1 and P2	P1 Smart Class BSNL optical fibre FTH-LAN/wifi
Total ICT facilitated Class rooms: 22		



Department of Zoology, Lecture Hall –Z1



Department of Chemistry , Lecture Hall –C1



Department of Physics Lecture Hall –P1



Microbiology Lecture Hall



Department of Geology Lecture Hall



Department of Geography, Lecture Hall – G6



Department of Criminology and Forensic Science Lecture Hall



Department of Chemistry Lecture Hall -C2



Department of Chemistry Lecture Hall –C1



Department of Botany Lecture Hall – B1



Department of statistics Lecture Hall

II. LABORATORIES:

Each department of the institute is well equipped with independent classrooms, laboratories, tutorial rooms, workshop and seminar hall etc. Video conference room and Internet Laboratory. Various Under graduate Departments of the subjects like Botany, Chemistry, Biotechnology, Criminology & Forensic. Geology, Geography, Industrial Fish & Fisheries, Mathematics, Physics are having sufficient laboratories. There are 30 plus well equipped laboratories including basic/applied and various research related fields. Availability of sufficient number of instruments for experiments for each student in the laboratory. Access to laboratory expert in the laboratories. Adequate supporting staff / lab assistants in the laboratory. In addition for PG programmes like M.Sc. Chemistry, M.Sc Botany and M.Sc Physics are facilitated with required laboratory facilities. The research laboratories in Research centers of each department are equipped with research facility including physical infrastructure and academic infrastructure.

1. DEPARTMENT OF CHEMISTRY



UG: Department of Chemistry Laboratory



Biotechnology Laboratory



PG: M.Sc General chemistry

DEPRMENT OF B.C.A/Computer Science

DEPRMENT OF B.C.A/Computer Science –Computer Lab



DEPRMENT OF BOTANY



DEPARTMENT OF CRIMINOLOGY & FORNSICSIENCE



DEPRMENT OF GEOLOGY



PG Mathematics Lab

DEPT. OF PHYSICS



Physics Laboratory



COMPUTER SCIENCE DEPARTMENT



DEPT. OF M.SC. PHYSICS & DEPT. LIBRARY

DEPT OF ZOOLOGY



INDUSTRIAL FISH & FISHERIES



DEPT. OF ANTHROPOLOGY

III. MUSEUMS

Five Museums namely (i) Botany Museum, (ii) Criminology & Forensic Museum, (iii) Geology Museum and (iv) Geography Museum are centre of attraction in the campus.

- (i) **BOTANY MUSEUM:** The Botany Department started in the year 1936. Since its inception, began the development of the departmental Museum. The first Head of the department Mrs. Elva Gonsalves and the staff contributed to starting of the Museum. The museum has vast collection of specimens ranging from all the divisions of Botany. Ever since it has been developed and maintained till this day. Further additions are made by teaching faculty and models prepared under the biological Techniques course students. There are a number of fossil specimens, seeds gums, fruits, economically important wood. The Botany Department has attempted to further the development of the museum by Cataloguing the bottle specimens, adding models on the sporophyte of Bryophytes and charts of forms of cyanobacteria and Mitosis. An attempt to expand the Economic Importance section was also undertaken. This has increased the collection to nearly 600 specimens and nearly 100 models.
- (ii) **CRIMINOLOGY & FORENSIC MUSEUM:** The museum in the Department of Criminology and Forensic Science, K.Sc.C. D has a collection of wax models, photographs of pioneers in the field of Criminology and Forensic Science, charts on motor vehicle and train accidents, photographs of finger prints and footprints and toxicological specimens, among many others. The Department of Criminology and Forensic Science contains two well equipped laboratories and a separate library.



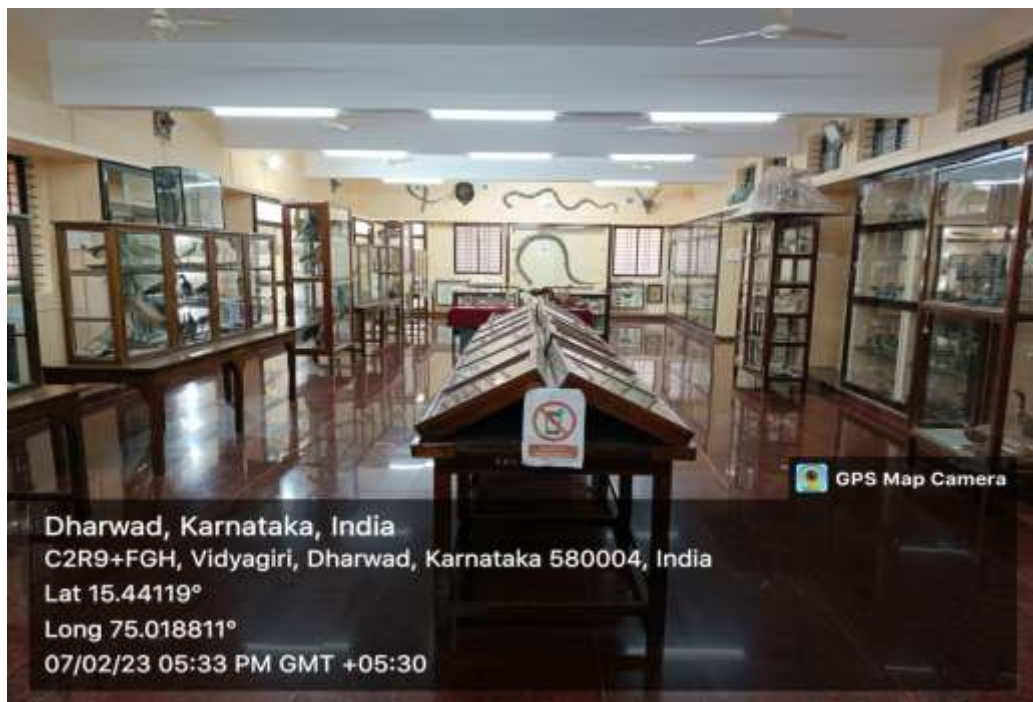
(iii) **GEOLOGY MUSEUM:** There is a marvelous museum in the Department of Geology has excellent exhibits comprising minerals, rocks and fossil specimens which have been systematically arranged. The museum has several maps, models, charts, aerial photographs and imageries, among many other educational materials. A few specimens available in the Geology museum are unique and rare. Thus, the museum in the Department of Geology, Karnatak Science College, Dharwad is considered as one among the best Geology museums in South India. The Department of Geology arranges seminars, workshops, exhibitions, invited lectures, field mapping and other competitions for students. The staff members engage themselves in societal activities, especially the popularization of Geo-sciences, in addition to their teaching and research work.



(iv) **GEOGRAPHY MUSEUM:**



(v) **ZOOLOGY MUSEUM:** It is well furnished with large collection of specimens. Taxidermy of the rare and important animals done by Mr. Mohan Morey are *King cobra*, *Hornbill*, *Flying Squirrel*, *Civet Cat*, *Golden Cat*, *Jungle Cat*, *Leopard cats*, *Fowls*, *Peacocks*, *Malbartrogan*, *Pangolin*, *Eagles*, *Owls*, *Woodpeckers*, *Ibis*, *Porcupine*, *Loris*, *Bats*, *Indian Giant Squirrel*, *Lemur*, *Otter*, *Mouse Deer*, *Crabs* both Marine and Fresh water these are the some of the animals. Padmabhushan Dr.Salim Ali, Great Ornithologist, Visited the KCD Zoology Museum in the year 1972 and he was very much excited, when he saw the rare *Malbartrogan Bird* in this Great Zoology Museum.



This well known Zoology Museum Includes some of the rare animal models like; *King Cobra, Python, Flying Squirrel, African Lung Fish, Cow Fish, Civet Cat, Head Mounted Wildboar, Head Mounted Deer, Golden Cat, Jungle Cat, Pangolin, Sting Ray fish, Octopus, Electric Ray Fish, Egles, Owls, Porcupine, Loris, Bats, Indian Giant Squirrel, Guinea Pig, Lemur, Otter, Mouse Deer, Crabs (both Marine and Fresh water), Brain Coral, Scorpion with young ones, Spiders, leaf Insect, Long horn beetles, Centipede, Euplectella (Glass rope sponge), Tortoise, Viper, Two Headed Snake (Common Sand Boa), Flying Lizard, Flying Fish, Chameleon, Star Fish, Peacock, Malbar Horn Bill, Malbartrogan, Flamingo, Human babies (3month, 4Month, 7month and 5-6Month,8month) Elephant Heart, Human Brain, and the Osteology section includes Skulls of Elephant, Tiger, Deer, Horse, Goat Rabbit , Alligator, Monkey, Tortoise, Crocodiles and skeletons of Bat, Monkey, Cat, Human, Snake, and Tortoise Shells. Different types of Birds eggs and Nests. At present About nearly 2500 animals are displayed in this zoology museum. Every year, Enormous number of students from LKG to PhD and public from different states /country visit this great Zoology Museum.*

III.NATIONAL SERVICE SCHEMEUNIT (NSS) & NATIONAL CADET CORPS (NCC):

Separate facility is provided to function the programmes and periods of NSS and 2/24 Batallion of NCC by allocating a room in BCA Department and a Room in Sports building of the college respectively. NSS Volunteers are regularly participating in swaccha bharata abhiyanas_pastic awareness programmes, village cleaning programmes, campus cleaning protoammes, polio vaccination ,covid vaccination programmes, national festivals etc Our college NSS Unit is located in BCA department campus with office room size 27 feet*21 feet area.

IV. ELECTRICAL INFRASTRUCTURE:

The campus is well connected with electrical supply by Karnataka Electrical Board (KEB). In addition 05 departments like Botany, Chemistry, BCA, Physics and Zoology are strengthened with Generators of 20-30KV capacity. There are 03 transformers (20 KV) installed by KEB and 04 transformers procured and installed by the college. UPS are installed in all the departments and office so that every building to receive uninterrupted electrical supply. Solar energy poles installed with the capacity of 100 AH. The electrical related aspects are dealt by the Resident Engineer, Section Office, Junior Engineer and expertise man power.

IV. WATER SUPPLY:

The water supply is supplied by the Municipal Corporation. In addition, there are 07 bore wells augmenting water supply to Academic buildings, Administrative buildings, hostels, gardens etc., for various purposes. This ensures the un-interrupted supply of water to meet the requirement of the college for its various day to day programmes and activities. The waste water treatment and its usage is in progress. The water supply related aspects are dealt by the Resident Engineer, Section Officer, Junior Engineer and expertise man power. All the departments are equipped with the Water filters for drinking water.

V. HOSTEL FACILITY:

Accommodation is made available to students of the college. Separate hostels for Boys and Girls are established.

- (i) ***Kaveri Girls Hostel:*** Kaveri Girls hostel is located in the campus of our college, such that students can reach any department of the college within 2-3 minutes. Kaveri girls hostel has two blocks Block-I and Block-II. The total capacity of the hostel is around 500 students. There are 100 rooms in Block-I with a General hall and 55 rooms in Block-II with a General hall. The facilities include Mess hall, Reading room, TV room, Solar water heater, 24x7 Security vigilance. Sports facility includes Indoor games, Recreational facilities, Gymnasium and Yoga center. Adequate water filters/ purifiers are facilitated.



(ii) Godavari and Thungabhadra Boys Hostel :

The students are selected as per the merit and Karnatak University Guidelines. The selected students are accommodated in Godhavari and Thungabhadra hostels, which are located very nearer to the college campus with pleasant atmosphere. Hostels are well equipped with good lighting, drinking water, hygienic toilets, spacious ground, and individual cot and table facilities. 73 students are took admissions for the academic year 2021-22. The Wardens and assistant staff are assigned with the responsibilities to look after the general discipline of the hostel and proper functioning.



(VI) HEALTH CENTRE:

The building adjacent to the Geography department is provided for the Hospital. Full time Outpatient Department facility is available in the college campus and a Medical Officer with adequate supporting staff is employed for this purpose. Medical facility is available for staff and students, during working hours of the institute and even after working hours (for students residing in institute hostels). In case of emergency the patient is taken to nearby private hospital. All students undergo “free” medical checkup during their stay in the campus. A Health Centre is present in the College Campus, where students are counseled and treated free of cost. It has a qualified doctor (Health Officer) and a clinical laboratory. Every Monday, a lady doctor visits the Health Centre of the College to give medical aid to ladies. The Health Centre is kept open on all working days, from 8 am up to 12 noon in the morning, and from 4 pm up to 6 pm in the evenings. The College authorities take the help of locally available doctors, including psychiatrists, to counsel the needy students.



VII.COMMON FACILITIES AVAILABLE ON THE CAMPUS – SPACES FOR SPECIAL

IQAC (Internal Quality Assurance Cell): Grievance Redressal Unit, Women’s Counselling Cell under Akka Associationll, Counseling and Career Guidance, Placement Unit, Health Centre, Canteen, Recreational spaces for staff and students, safe drinking water facility, Auditorium, etc. earmarked for conducting activities related to said units.

VIII.COMMERCIAL COMPLEX:

Recently a new building is established in front of the Sports building for the augmentation of stationary purchase, photocopying, and other facilities for easy accessibility of academic related commodities.

IX. CANTEEN:

A separate building is provided for the Canteen. The adequate furniture, fixtures, water and electric facilities are provided. The management of canteen is assigned to the private agency.

X. LIBRARY:

Library is automated using Integrated Library Management System (ILMS). The college has a central library with a separate two storied building spanning over an area of 3440.52 square metres, which is equipped with Library Management System services.



Library has a huge collection of books, which include Text, Reference and other books, in addition to foreign, national and local journals as well as magazines, and daily news papers. The reading room is well furnished to accommodate 450 students at a time and provides conducive environment for study. A visitor record is maintained for students and faculty members, and the New Arrivals of books and journals are displayed on a rack. The library has under closed circuit television (CCTV) surveillance system. Collections include more than 1.82 lakhs books, 24 Journals / Magazines, 93,809 e-books, and 6,237 e- journals. The library is automated, and has a spacious reading hall, reference section and a

separate 24 X 7 reading room facility. The library opens at 8 am, and is kept open up to 8pm except Sunday and government holidays, except the 24 x 7 reading room. Library, Services: College Central Library provide different types services to the students and Staff Members of the college such as (i) The issue and return of books (ii) To assist in reference of journals (ii) To assist in access to e-journals, project reports and CD's (iii) To guide for usage of Daily New Papers (iv) To assist in OPAC facility for accessing the required books. (v) Online access to both students and teachers of the *N-LIST* facility. (vi) To assist in INFLIBNET. (v) Facilitating ILMS Details: The Institute installed Integrated Library Management System (ILMS) namely "*ELIB*" 16.2 version. (vi) Library Software: Library has provision for using software such as the ELIB software and OPAC (Online Public Access Catalogue).



SELECTED INSTRUMENTS FROM VARIOUS DEPARTMENTS / SECTION

DEPARTMENT OF BOTANY AND GENETICS



Stereo Microscope



Microscope



UV Trans Illuminator



Cold Centrifuge



Magnetic Stirrer



Cyclo Mixer



Laminar Air Flow



Colorimeter



Bench top centrifuge



Incubator



Oven



Transilluminator

PCR Machine



Electrophoresis Power Pack

DEPARTMENT OF CHEMISTRY



Rota Evaporator



CH Instrument – CV Workstation



Hot Air Oven and Water bath



Sonicator



UV Spectrophotometer



UV Spectrophotometer



Magnetic Stirrer with Hotplate



**(1) Microwave Oven (2) Ice Chiller
(3) Hot Air Oven**



Hot Air Oven



UTM Machine



Fuel Testing Instruments



Oil bath with magnetic stirrer

BIOTECHNOLOGY SECTION



Shaker Water Bath



Water Distillation Unit



Incubatore



Laminar Air Flow



Tissue Culture Rack



Cooling Centrifuge

DEPARTMENT OF CRIMINOLOGY AND FORENSIC SCIENCE



Museum



Museum



Forensic Bullet Comparison Microscope



Forensic Bullet Comparison Microscope

DEPARTMENT OF GEOGRAPHY



DEPARTMENT OF MICROBIOLOGY, ZOOLOGY AND INDUSTRIAL FISHERIES



Microscope



Incubator shaker and Incubator



Autoclave



Hot Air Oven



pH Meter



Digital Water Bath



Water Distillation Unit



Centrifuge



BOD Incubator





Serological Water bath

DEPARTMENT OF PHYSICS



Gamma Ray Spectrometer



GM Counter



Paramagnetic Susceptibility Instrument



ESR Spectrometer



Constant Deviation Spectrograph



Oscilloscopy Analog CRO



Old Ballistic Galvanometer



Helium Neon Laser



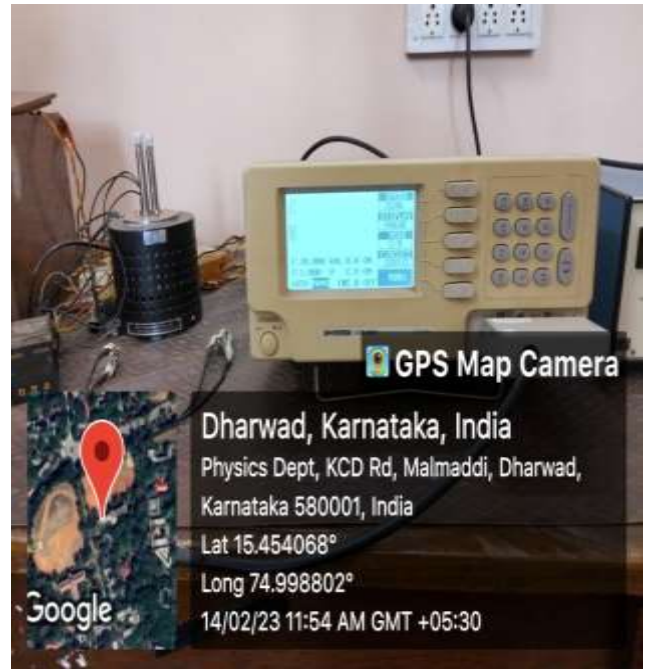
Diode Laser



Digital Storage Oscilloscope



Fluke Multimeter



LCR Meter



Hot Air Oven



KBr Press



Optical Fibre Kit



Microprocessor Kit



Displacement Sensor Kit



Strain Gage Kit

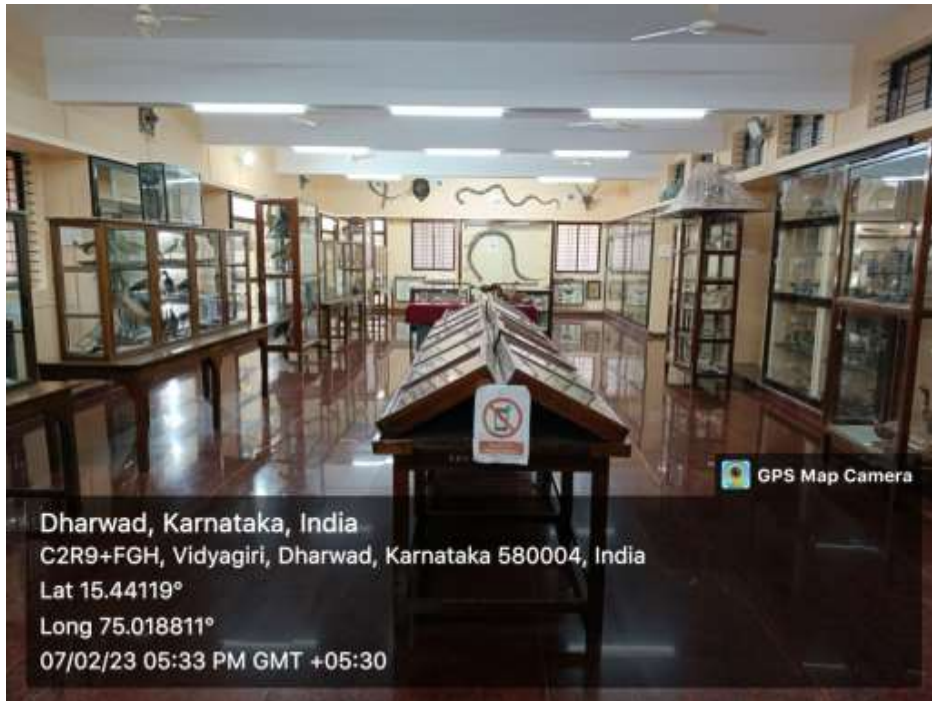


Microcontroller



Two probe Setup

ZOOLOGY MUSEUM




Principal,
Karnatak Science College
Dharwad.